

Housing and Accommodation Solutions

Professional, scalable solutions for councils, housing associations, developers, hotels & major infrastructure projects.



Rapid
Scalable
Sustainable

A Partnership Built for Scale

Lifestyle Eco Lodges believe that sustainability and luxury can coexist.

Our eco-friendly capsule homes offer a perfect blend of modern design, innovative technology, and environmental consciousness.

Our studios are eco-friendly dwellings inspired by astronaut living quarters.

Made with lightweight materials, they have a sleek design that maximises space using multi-functional furniture and built-in storage.

Smart technology lets you control the interior environment easily, while solar panels and energy-efficient systems ensure sustainability.

Whether you're looking to create a serene retreat, a stylish home office, or a unique Airbnb experience, our capsule lodges provide the ideal solution.



Luban Cabins is where advanced technology and sustainable thinking come together.

Luban Cabins deliver precision, strength, and sustainability in every build.

With four specialist workshops, they combine aerospace-grade materials with smart modular engineering to create durable eco lodges that perform anywhere.

Each structure is built in-house under strict quality, safety, and material standards - from R&D to installation - ensuring complete accuracy and peace of mind.

With a 50-year lifespan and globally trusted reputation, Luban delivers outstanding reliability and resilience on every project.



50 Homes - 20 Weeks

Future Ready Accommodation, Delivered Today

SMART HOUSING. SUSTAINABLE IMPACT.

Lifestyle Eco Lodges delivers high-quality modular accommodation for councils, developers, and infrastructure projects across the UK.

Built off-site in controlled environments, our modular homes ensure faster delivery, reduced waste, and consistent quality.

We support urgent housing needs with speed, certainty, and sustainable design.



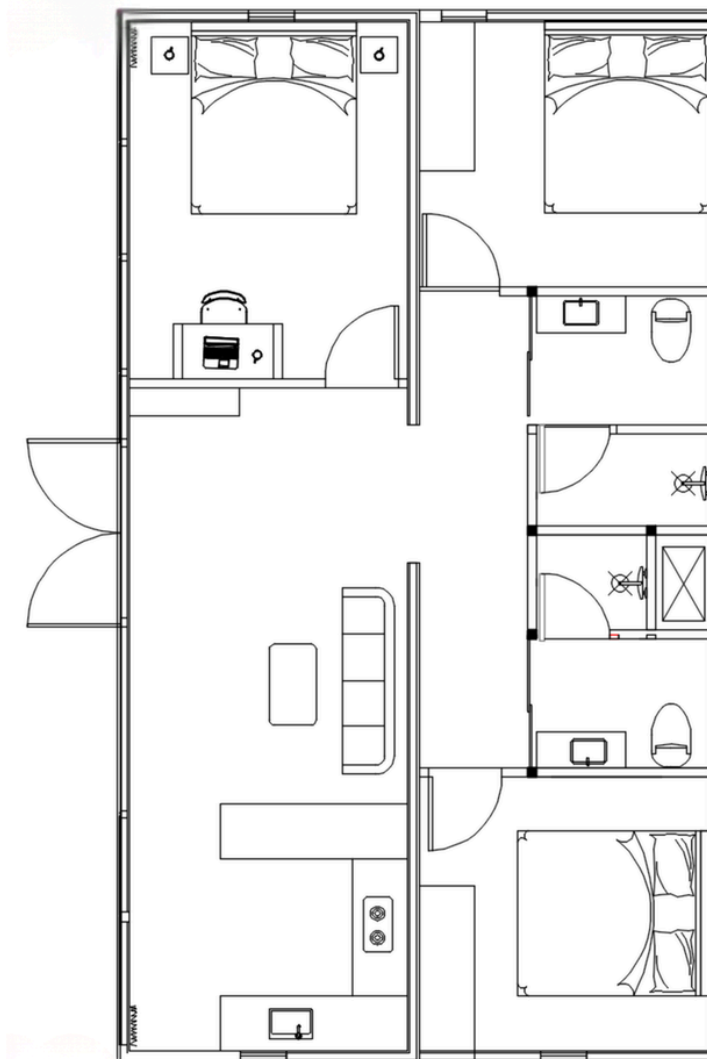
Built for Procurement Confidence. Fully Certified. Fully Delivered.



Facts That Build Confidence

Fast, future-ready homes delivered with compliance and control.

- Delivery Capacity:** Up to 50 units in 4 months
- Construction Method:** Off-site, factory-built
- Thermal Efficiency:** U-Value 0.15 W/m²K
- Acoustic Rating:** Up to 45 dB soundproofing
- Warranty:** 30 year structure
- Lifespan:** 30+ years
- Compliance:** BS EN 1647 Certified and ISO 9001
- Sustainability:** 30% lower CO₂, 80% less waste
- Smart Controls:** Air-con, underfloor heating, automatic curtain, AV system, lighting, fresh air
- Build Features:** Triple glazed privacy glass, aerospace aluminium, galvanized steel frame, thermal insulation
- Elements:** Wind Pressure Beaufort 9, Anti Corrosion, Fire & Waterproof
- Lighting:** LED Ceiling Light Belts, Low Level light Belts, Ambiance Light Belts, External Light Belts.
- Design Flexibility:** Stackable, Disability design options.



Built for Procurement Confidence. Fully Certified. Fully Delivered.

Delays Cost More Than Money They Cost Trust

THE COSTS OF TRADITIONAL BUILDS

Traditional builds take 12–24 months.

Labour shortages, weather delays, and material costs are only increasing.

Construction costs have risen by around 25–30% since 2020, driven by supply-chain volatility and inflation in materials and labour.

Modular is the future alternative.

It's now the most reliable path to delivering housing on time, on budget, and in full compliance.

Public pressure and ESG requirements demand faster, greener housing delivery.



Used by councils, infrastructure projects, and developers who need certainty - not excuses.

Built for Those Who Deliver at Scale

Supporting UK councils, developers, and infrastructure leaders with housing that works.

Public Housing Delivery

COUNCILS

*Deliver emergency
and affordable
housing with certainty*

HOUSING ASSOCIATIONS

*Accelerate delivery.
Reduce backlog.*

GOVERNMENT & DEFENCE

*Meet urgent housing
and welfare needs.*

Private & Infrastructure Delivery

DEVELOPERS

*De-risk planning.
Unlock capital.
Scale with confidence*

HOTELS & RESORTS

*Expand to new locations.
Open faster. Extend your
existing accommodation.*

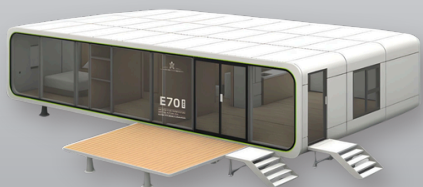
ENERGY & INFRASTRUCTURE

*House key workers
efficiently.*



Four Signature Models, One Factory-Built Standard

Factory-built for speed, designed for trust, and ready to scale. Across sectors, sites, and specs.



E70 Multi Bedroom

Spacious 2-3 bed homes

Ideal for family and social housing projects.



E50 Urban Smart

Compact 1-2 bed homes

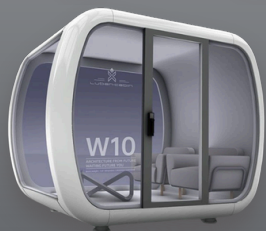
Designed for urban infill or tight footprints



K30 Guest Suite

Hotel-style studios

Perfect for workforce or guest accommodation.



W10 Studio Pods

Ultra-compact, studio pods

Ideal for rapid deployment, remote settings, security, or first aid use.

THE LIFESTYLE ADVANTAGE

Speed You Can Count On

Delivered in 12-16 weeks.

Built for Public Sector Procurement

Framework-aligned, ESG-compliant, and pre-vetted to move quickly through red tape.

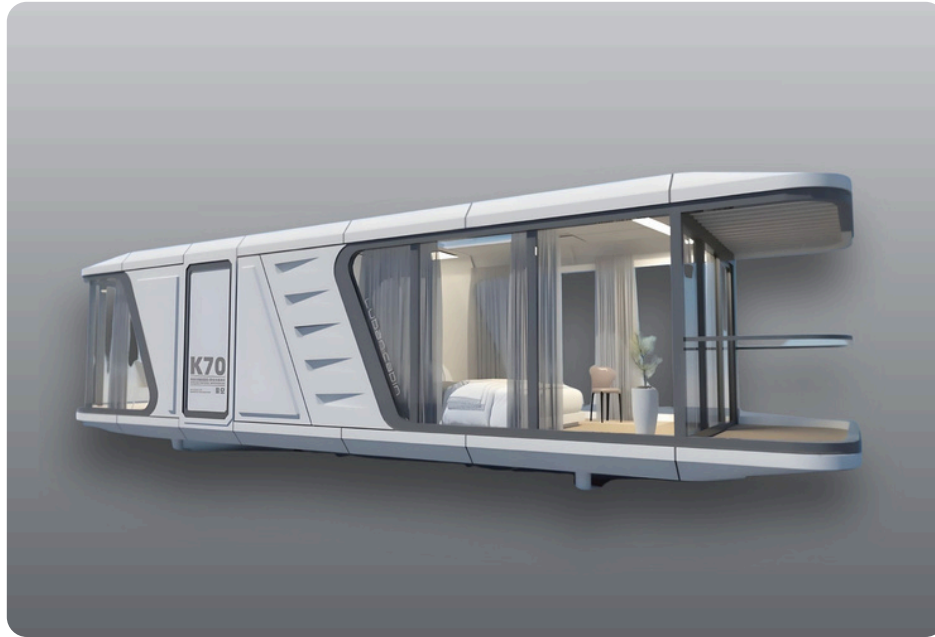
End-to-End UK Delivery

From design to install - all handled by our in-house team. No outsourcing, no delays.

Net-Zero Friendly

Every unit is designed with low-carbon materials and efficient systems to support your ESG goals.

All models are fully compliant, turnkey-ready, and delivered within weeks.



IDEAL FOR

- Personal retreats & guest stays
- Airbnb / Booking.com rentals

Fully compliant. Urban-ready.
Delivered in 12-16 weeks - every time.

K70 - 2-Bed Eco Capsule Lodge

Stylish, compact, smart living

The K70 is a high-spec 2-bedroom eco lodge combining intelligent design with modern comforts. With panoramic glazing, smart controls, and a fully fitted interior, it's ideal for luxury getaways, home offices, or high-return rentals — all within a compact 38m² footprint.

KEY FEATURES

Smart Living Design - Intelligent lighting, access control and integrated tech in a sleek, modern shell.

Thermal & Acoustic Comfort - Highly insulated shell ensures energy efficiency demands all seasons in a compact form.

Model:	K70
Price:	from £69,950 + 5% VAT
Dimensions:	11.5m × 3.3m × 3.3m
Space:	38 m ²
Sleeps:	2-4 persons



IDEAL FOR

- Professional Occupancy
- Luxury Getaways

Fully compliant. Urban-ready.
Delivered in 12-16 weeks - every time.

S70 - Executive Suite

Ideal for luxury permanent occupancy

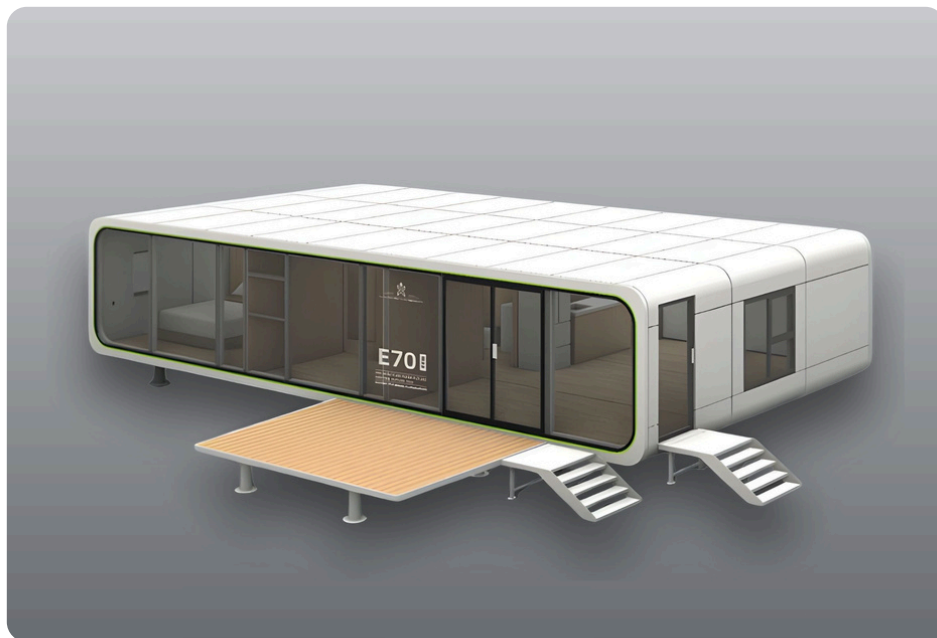
The S70 is a luxurious, high-spec modular home that combines modern design with practicality. Space-efficient and built to the highest standards, it comes fully equipped with its own Wi-Fi connectivity and a range of premium features.

KEY FEATURES

Luxurious & Spacious - Offers modern interiors and appliances to the highest standard.

Thermal & Acoustic Efficiency - Highly insulated shell ensures energy efficiency demands all seasons in a compact form.

Model:	S70
Price:	from £65,000 +5% VAT (with early-partner discount)
Dimensions:	11.5m × 3.3m × 3.3m
Space:	38 m ²
Sleeps:	2-4 persons



E70 - Multi-Bedroom Living

Spacious modular homes

The E70 is a premium, space-efficient modular home designed for rapid delivery and long-term family living across residential and public sector projects.

IDEAL FOR

- Social housing
- Modular suburban schemes
- Family rehoming / decant programs

Fully compliant. Turnkey-ready.
Delivered in 12-16 weeks - every time.

Model: E70 Single
Price: from £45,000 +5% VAT
Dimensions: 11.5m × 2.15m × 2.5m
Space: 25 m²
Sleeps: 2 persons

Model: E70 Pro Double
Price: from £83,500 +5% VAT
Dimensions: 11.5m × 4.3m × 2.5m
Space: 50 m²
Sleeps: 4+ persons

Model: E70 Max Triple
Price: from £135,000 + 5% VAT
Dimensions: 11.5m × 6.45m × 2.5m
Space: 75m²
Sleeps: 6+ persons



E50 - Urban Smart

Compact design with big performance

The E50 is a sleek, space-efficient modular home designed for compact sites, key worker housing, and urban infill across public and private developments.

IDEAL FOR

- Urban infill
- Key worker housing
- Starter or mid-rise modular schemes

Fully compliant. Urban-ready.
Delivered in 12-16 weeks - every time.

Model: E50 KB Single
Price: from £28,500 + 20% VAT
Dimensions: 5.8m x 6.215m x 2.5m
Space: 12.5 m²
Sleeps: 1 - 2 persons

Model: E50 Pro Double
Price: from £53,000 + 5% VAT
Dimensions: 5.8m x 4.3m x 2.5m
Space: 25 m²
Sleeps: 2 + persons

Model: E50 Max Triple
Price: from £69,950 + 5% VAT
Dimensions: 5.8m x 6.45m x 2.5m
Space: 37 m²
Sleeps: 4+ persons



K30 - Hospitality Guest Suites

Compact luxury with full amenities

The K30 is a compact, self-contained lodge that blends modern comfort with space-efficient design, offering 18m² of sustainable, high-spec accommodation for hospitality, workforce use or extra rooms in existing hotels.

KEY FEATURES

Open-Plan Living - Seamlessly integrated kitchen, dining, and living space for a modern, efficient layout.

Energy-Efficient Design - High-performance insulation & triple-glazed windows reduce energy consumption.

Sustainable Materials - Constructed with eco-certified steel, aluminium, and non-toxic interior finishes.

IDEAL FOR

- Resorts
- Festivals
- Short-term lets
- Worker accommodation

Fully equipped. Guest-ready.

Delivered in 12–16 weeks - every time.

Model:	K30
Price:	from £47,000 + 5% VAT
Dimensions:	5.8m × 3.0m × 3.1m
Space:	18 m ²
Sleeps:	2 persons



IDEAL FOR

- Emergency shelter
- Security pods
- Pop-up stays

Lightweight. Off-grid ready.

Delivered in 12-16 weeks - anywhere you need it.

W10 Tiny House

Micro-living that moves with you.

The W10 is an ultra-compact module engineered for flexible deployment, blending insulated efficiency with modular utility to serve hospitality, emergency, and remote housing needs.

KEY FEATURES

Mobility & Flexibility - Can be trailer-mounted or crane-deployed - relocation is simple.

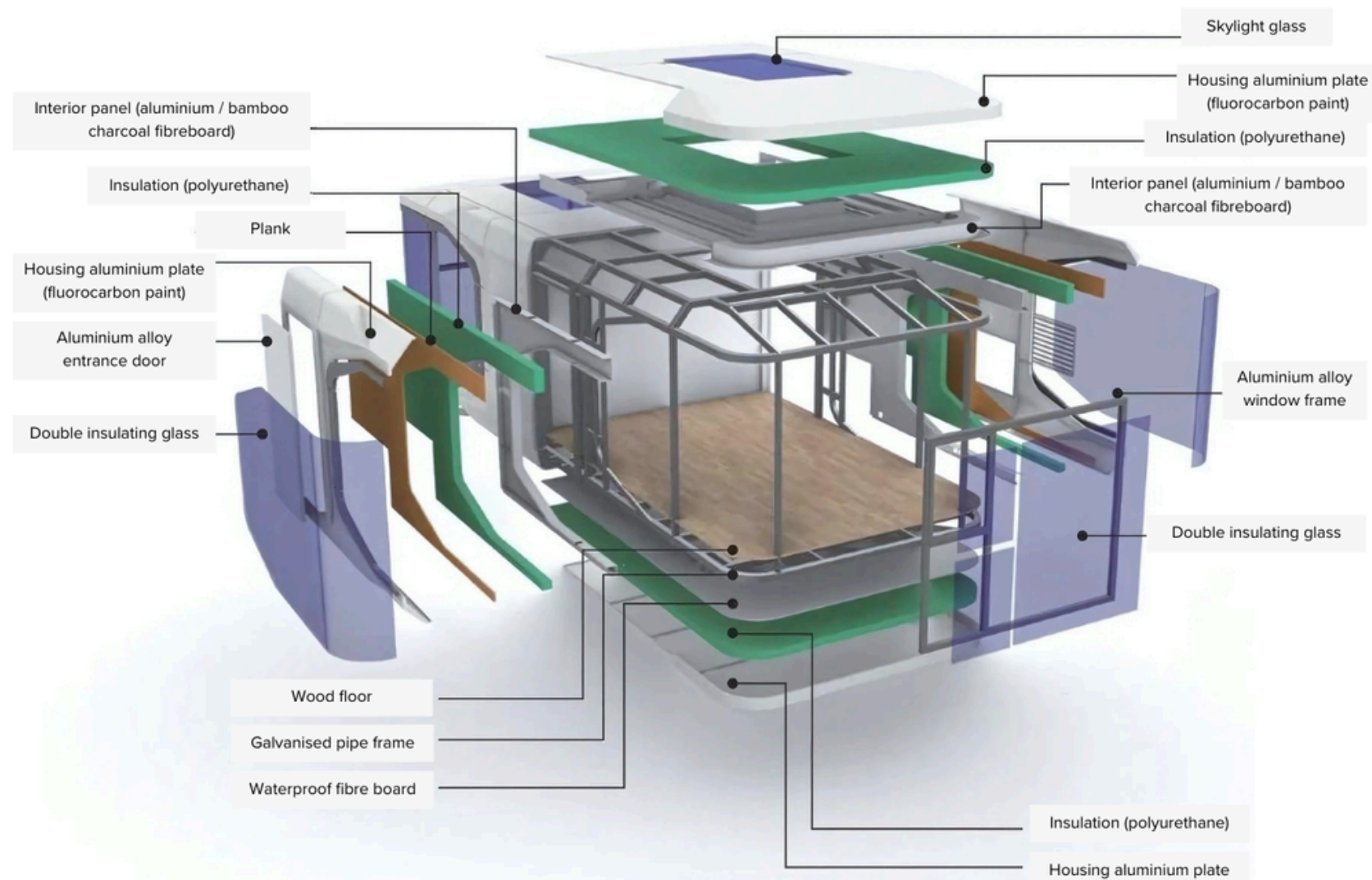
Thermal & Acoustic Efficiency - Highly insulated shell reduces energy demands in compact form.

Versatile Use Profiles - Ideal as security unit, kiosk, podcast studio, remote meeting pod or event hub.

Model:	W10
Price:	from £14,950 + 20% VAT
Dimensions:	2.85m × 2.15m × 2.3m
Space:	6 m ²
Sleeps:	1-2 persons



Built to Code. Delivered with Confidence



Combining structural integrity with energy performance.

Every unit is constructed to meet and exceed the BS EN 1647 standards with the use of thickened steel frame, aluminum exterior panels, thermal insulated layers and 6+12+6 insulated glass.

Flexible Procurement

Whether you're ready to buy or need flexibility, our procurement options and streamlined delivery model make moving forward simple - and fast.

PROCURE YOUR WAY

Choose the commercial model that fits your funding structure and risk profile.

Buy - Upfront purchase with 30 year structural warranty.

Lease (5-year) - Spread costs, retain full use.

Buy-Back (3-year) - Guaranteed exit option built-in, subject to inspection

If you need housing fast without long-term risk, Lifestyle make that easy.

Get started in the way that works best for your team.

Seamless Delivery

FROM CONCEPT TO KEY HANDOVER

Design - Layout, finishes, and spec approval.

Factory Build - Completed off-site in 6–8 weeks.

Delivery & Install - Transport and craning on-site.

QA & Handover - Certification and move-in ready.

Every stage is managed by our team - start to finish

Strong Returns, Sustainable Demand

Eco modular units don't just meet sustainability goals - they deliver real financial returns.

With rising demand for unique, green accommodation, your investment can pay for itself in just a few seasons.

ROI HIGHLIGHTS

- High occupancy via AirBnB
- Break-even in 2–4 years
- Revenue from lets, retreats, workforce
- Durable, low-maintenance build
- ESG-friendly for funding & planning

Ready to run the numbers? Let's build your ROI

E70 Max Triple - 3-bed Modular Home

High Occupancy

Nightly Rate: **£300**

Occupancy Rate: **68%**

Annual Turnover: **£74,460**

Purchase Price: **£135,000**

Investment Recovery Time: 1 year 10 months



E70 Max Triple - 3-bed Modular Home

Medium Occupancy

Nightly Rate: **£250**

Occupancy Rate: **55%**

Annual Turnover: **£50,188**

Purchase Price: **£135,000**

Investment Recovery Time: 2 years 9 months



Trusted, Sustainable and Built for Public Value

Lifestyle Eco Lodges is built to meet the needs of councils, developers, and infrastructure partners, with modular solutions designed for speed, quality, and compliance.

SUSTAINABILITY & SOCIAL VALUE

Built for a Low-Carbon, High-Impact Future

30% lower carbon footprint

80% less construction waste

50% lower tenant energy bills

Boosts local jobs + SME suppliers

Designed for ESG-led procurement and public impact.

READY TO DELIVER

Built for Speed & Certainty

Factory-built for speed + certainty

30 year structural warranty, 30+ year lifespan

Buy, lease, or buy-back options

Aligned with public sector needs

Designed for fast, flexible, and compliant delivery.

Ready to deliver faster, smarter housing?

Lets talk - our in-house planning adviser can offer expert guidance tailored to your project.



Let's Build the Future of Housing - Together

Whether rehoming families, housing key workers, or scaling your development, we're here to deliver fast, modern modular housing that meets your mission

Lifestyle Eco Lodges

Bicester Avenue Garden Centre

Oxford Road

Bicester

OX25 2NY

www.lifestyleecolodges.homes

+44 (0)7525 852169

sales@lel.homes



[VISIT WEBSITE](http://www.lifestyleecolodges.homes)